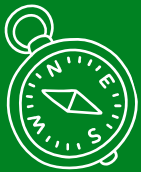
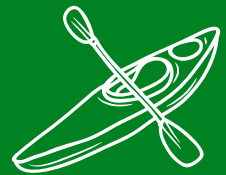




SANDY RIDGE



2024



girl scouts
of eastern
south carolina



Memories to last a lifetime!

📍 3680 Girl Scout Rd
Bennettsville SC 29512

☎ 843-479-6814

✉ Sandyridge@girlscoutsc.org



ABOUT

girl scouts
of eastern
south carolina



Girl Scouts of Eastern South Carolina serves girls and adults in 21 counties: Allendale, Bamberg, Barnwell, Beaufort, Berkeley, Calhoun, Charleston, Chesterfield, Clarendon, Colleton, Darlington, Dillon, Dorchester, Florence, Georgetown, Horry, Lee, Marion, Marlboro, Orangeburg and Williamsburg. These 21 counties are divided into Service Areas to serve our membership and community.

Girl Scouts of Eastern SC offers girls the opportunity to enjoy fun, life-changing experiences they might not otherwise have. They are encouraged to stretch their limits and gain courage and confidence in an all-girl, girl led supportive environment. Their experiences can be anything from day camp, resident camp in the summer, building business skills while selling cookies, learning horseback riding, cooking and traveling. Last year top cookie sellers went on a Caribbean cruise, a trip to Southern California where they visited Disney Land and Universal Studios, attended a professional ball game and went on a whale watching cruise. Girl Scouts builds girls of courage, confidence and character who make the world a better place.

Girl Scouts range in age from K5 to Grade 12. They have experiences that are grade level and age appropriate that are both educational and fun.

In Girl Scouts, girls discover the fun, friendship and power of girls together. Through the many enriching experiences provided by Girl Scouting, they grow courageous and strong.

Key Goals of Girl Scouting:
Developing Self-Potential
Relating to Others
Developing Values
Contributing to Society

You can learn more about our Girl Scouts, our council and the events they are involved in by visiting the website, www.gsesc.org and www.Facebook.com/GirlScoutsESC.



WELCOME TO SANDY RIDGE!

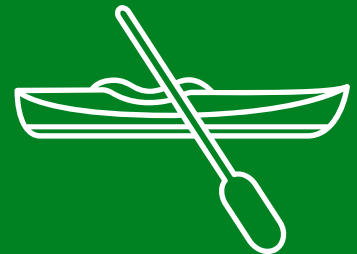
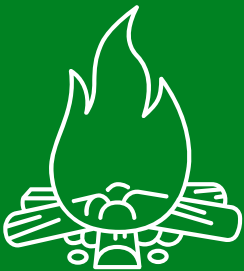
Welcome to another summer at Sandy Ridge. Themed camps are back! Each camp has a unique combination of experiences geared towards the theme of the week.

At Sandy Ridge, we give girls a chance to discover more about who they are and what they can become. From the backyard to the backcountry, Girl Scouts has a long, storied, and successful history of getting girls outdoors.

Not a Girl Scout? Not a problem! During the registration process you will be given the opportunity to register as a Girl Scout!

Whether she is a first-time camper or an experienced adventurer, an outdoor enthusiast, or a creative artist, your camper will find her perfect program at Sandy Ridge.

As always, thank you and we can't wait to see you at Sandy Ridge.



**SANDY RIDGE
CAMP DIRECTOR,
CHUCK ILER
AKA: SQUIRREL**



**MEET RACKY,
SANDY RIDGE'S
CAMP MASCOT!**

SANDY RIDGE CAMP

INFORMATION:

Registration will open on December 15th at noon. No deposit will be due at this time. Deposit/1st payment will need to be paid by April 1st. Any registrations with no deposits or 1st payment not made by April 1st will be deleted from the system.

Early Bird Discount

The early bird gets the worm! Early bird registration will begin on December 1st at noon thru February 1st at noon. Registration at this time will save \$50 off each camp session(s). You can pay the remaining camp fee at a later date.

This discount does not apply to Troop Adventure Camp or Weekend Camps.

Registration for Summer Resident Camp

Sandy Ridge will utilize the Active Network for online summer resident camp registration!

How to Register:

- Go to www.girlscoutseasc.org
- Click on “Camp”
- Follow the step by step direction to register on Active Network. (write down your User Name and Password)
- If you have a problem, try a different Internet browser.
- If you have an issue during the registration process or do now wish to register online (paper registration), please contact Chuck Iler e-mail Sandyridge@girlscoutseasc.org or 843-479-6814.

Confirmation Packets

Confirmation packets will be e-mailed to the e-mail address provided after the deposit has been made. Please make sure to check your SPAM/JUNK mailbox. The packet will include all necessary forms, check-in and check-out procedures, a packing list, and any additional information that your camper needs. Please follow the directions in the packet concerning what forms to bring with you to check-in.

If you do not receive a confirmation packet, please e-mail Sandyridge@girlscoutseasc.org.

Free Cookie Camp Recipients

Girls who sold 1300+ boxes of cookies will earn a free camp session, valued at \$450.

SANDY RIDGE CAMP

INFORMATION:

Deposits and Payment of Balance

A \$50/\$100 non-refundable deposit is required for all resident camp registration due April 1, 2023. The deposit amount is \$50 for on property camp sessions and \$100 for Travel Trips or Horse Camps. Deposits are applied to the camp session. The balance of camp fees are due by June 1st, 2023 for all camps. All registrations will be charged a \$5.95 service fee per camp session. Payments can be made in multiple installments using Active Network online registration system.

Cancellation and Refund

Should we have a lack of registrations, a session may be cancelled. Please note that a session may be cancelled within two weeks of its start date. If your camper's session is cancelled we will do our best to accommodate your camper in another session. Camp sessions are held regardless of weather. If a camper cancels, refunds will be issued, less the required non-refundable deposit.

Cancellations will need to be made in writing 30 days prior to June 1st, 2023.

No refund of camp payment or deposits will be given after June 1, 2023.

There will be no refunds for early departure, whether for personal reasons or a natural disaster.

Financial Aid

Financial Aid is available to supplement the payment of camp fees. It is only available to current registered members of Girl Scouts of Eastern South Carolina and is awarded based on the need of the girl and availability of funds. Campers must be registered for summer resident camp and the required non refundable deposit must be paid before submitting a Financial Aid application.

Applications must be received on or before April 15, 2023 for consideration. This form can be found at www.girlscoutseasc.org under Camp. Notification of the awarding of funds will be on or before May 1, 2023.

Financial Aid is not available for Troop Adventure Camp or Weekend Camps.

Current-Sea

Girl Scouts may apply their Current-Sea earned during the 2024 Cookie Program, for camp session deposits, camp session payments, trading post, Waldo, camp photos, any Girl Scout programmatic events.

SANDY RIDGE CAMP

INFORMATION:

Camp Staff

Camp staff is a main factor in providing a happy and rewarding experience for your camper. The staff selection process includes a background check, extensive screening, and an interview with each staff member. They are selected based on experience, maturity, judgement, and a desire to share their enthusiasm and skills with children. All staff members participate in an intensive onsite training program prior to camp and ongoing evaluations throughout the summer. The Camp Director and Assistant Camp Director are highly trained and are specialized in their fields. All staff members are dedicated to making resident camp a positive, unique, and memorable experience for your camper.

Cell Phones at Camp

Cell phones will be allowed for girls to bring to camp. They will be kept with the counselors in a lock box. Campers in Grady Lodge will be permitted to use their phones and call home during rest hour each day from 12:30pm - 1:30pm. Campers in cabins will be allowed to call home during shower time, between 8:00pm - 10:00pm (please keep in mind girls need to shower and get ready for bed) and be able use their phones during rest hour to take picture from 12:30pm - 1:30pm. Sundays and Thursdays are opening and closing campfires and run late into the evening; campers will not be permitted to use their cell phones on these nights. Phones will not be allowed in restrooms or cabins. If a girl does not have a cell phone, they will be allowed to use the camp office phone.

As always, we like the girls to disconnect while at camp, but we understand the need to speak to your child daily. We hope this will alleviate some stress and make for a better camp experience for everyone.

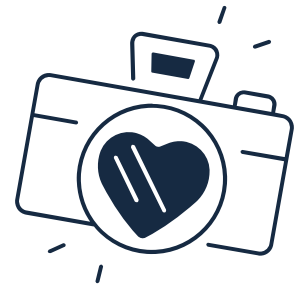
Please remember that sometimes talking to family members from camp may increase homesickness and could cause more issues with her stay at camp.

Any inappropriate phone usage (bullying, inappropriate pictures or websites, etc) the phone will be confiscated and returned in their check-out folders.

Please speak with your camper prior to coming to camp about this.



SANDY RIDGE CAMP PHOTOS:



WE'VE GOT WALDO!

girl scouts
of eastern
south carolina

Sandy Ridge Girl Scouts Camp is excited to announce we're offering Waldo's facial recognition powered mobile app this summer! You'll be able to sit back and relax while Waldo delivers YOUR photos to you and your family members!

★ HOW TO ENROLL

Text this code to 735-343:
SANDYRIDGE24

or

Scan here with your
phone camera!



50% of proceeds go to
camper scholarships!



NOT INTERESTED IN PHOTO DELIVERY?

View your photos at our free web gallery! Head to
waldophotos.com/galleries and enter our join code:

SANDYRIDGE24

3680 Girl Scout Rd
Bennettsville SC 29512

843-479-6814

Sandyridge@girlscoutsc.org

SANDY RIDGE CAMP

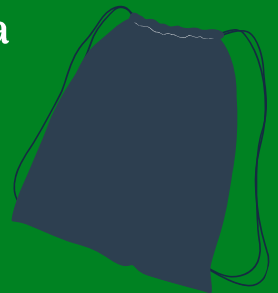
CARE PACKAGES:

Surprise your camper with a care package this summer!

Each care package will come all tied up in a draw string backpack and include:



- Water bottle
- Journal & pen
- Plush animal
- Lip balm
- 2024 Sandy Ridge patch




Cost of care package is \$35.

If you would like to include a personal note to your camper, please email chall@gesc.org no later than 1 week prior to the camp.

Care packages are able to purchase care packages for their campers up to 2 week prior to their campers session.

To purchase care packages please email Courtney Hall at chall@gesc.org

 Courtney Hall
GSESC Shop Manager

 (843)552-9910
ext: 2000

 chall@gesc.org

SANDY RIDGE 2024

SUMMER TIMELINE

- 6/14-16 ● Dad & Me Weekend
- 6/16-21 ● Week 1
 - Mini Session 1 (6/16-18)
 - Mini Session 2 (6/19-21)
 - Dancing With the Scouts
 - I do What I Want
 - Llama Trek (Travel Camp)
 - Pony Tails (Horse Camp)
 - CIT 1
 - CIT 2
 - Tall Timbers (Primitive Camping)
- 6/21-23 ● Mom & Me Weekend
- 6/23-28 ● Week 2
 - Wild & Wacky Sports
 - Iron Chefs
 - Gamers in the Wild
 - Rapid Riders (Travel Camp)
 - Ropin' Wranglers (Horse Camp)
 - CIT 1
 - CIT 2
 - Backpacking 101
- 6/28-30 ● Troop Adventure Camp #1
- 7/7-12 ● Week 3- Harry Potter
 - Year 1
 - Year 2
 - Year 3
 - Knight Bus (Day Trippers)
 - Abraxon Riders(Horse Camp)
 - CIT 1
 - CIT 2
 - Tall Timbers (Primitive Camping)

- 7/12-14 ● Troop Adventure Camp #2
- 7/14-19 ● Week 4
 - Mini-Mermaids
 - Crazy Science
 - Anime Camp
 - Zombie Survivor
 - River Wild (Travel Camp)
 - CIT 1
 - CIT 2
 - Tall Timbers (Primitive Camping)
- 7/19-21 ● Family Camp Weekend
- 7/21-26 ● Week 5- Taylor Swift
 - Fearless
 - Wildest Dreams
 - ...Ready for it
 - Shake it Off (Travel Camp)
 - White Horse (Horse Camp)
 - CIT 1
 - CIT 2
 - Tall Timbers (Primitive Camping)
- 7/28-8/2 ● Week 6
 - Troublemakers
 - Monkey Business
 - Bad Apples
 - Zoo Mania (Day Trippers)
 - CIT 1
 - CIT 2
 - Tall Timbers (Primitive Camping)



WEEK 1

JUNE 16-21



Mini Sessions

Ages 6-8

Regular: \$250 EB: \$200

Session 1: Sun 16 -Tues 18

Session 2: Wed 19 - Fri 21

- Are you ready for a camp experience to get you hooked on Sandy Ridge? Our mini sessions offer campers two nights and three days full of camp activities, exploration, and adventures that will make you want to come back for more!



I do What I Want

Ages 12-14

Regular: \$450 EB: \$400

- Its your schedule you make it! Camp is your for the playing and exploring! Choose from boating (kayak, canoe, and paddleboard), swimming, shooting sports (archery, slingshot, tomahawks, and paintball), arts and crafts, and many more activities to fill their day!





WEEK 1

JUNE 16-21



Llama Trek

Ages 12-17

Regular: \$650 EB: \$600

- Did someone say Llamas! Travel to Cosby, TN to visit Smokey Mountain Llamas. Spend two days hiking and hanging out with your new llama friends. Learn how to care for Llamas and what they eat. You might even get to visit the baby Llamas. Girls will tent camp at a local camp ground and cook out over a fire.



Pony Tails

Ages 8-10

Regular: \$550 EB: \$500

- Join us as the girls travel to Fourth Rock Stables in Lumber Bridge, NC. Girls will spend 3 days at Fourth Rock Stables learning what it takes to be a cowgirl. Horses need lots of care, exercise and food. Girls will get a horse experience they will never forget. So get ready and saddle up!



CIT 1 & CIT 2

CIT 1 Ages 14-15

Regular: \$200 EB: \$150

CIT 2 Ages 16-17

FREE

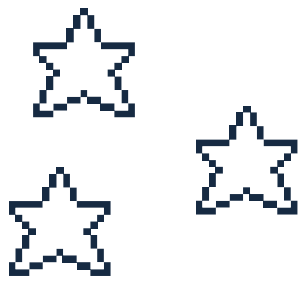
- Please see the CIT page further on in the brochure for more details.

Tall Timbers

Ages 11-17

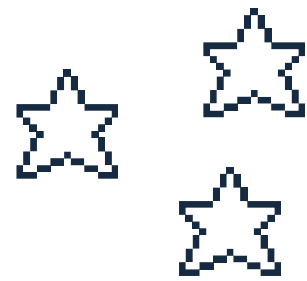
Regular: \$300 EB: \$250

- Please see the Tall Timbers page further on in the brochure for more details.



WEEK 2

JUNE 23-28



Wild & Wacky Sports

Ages 6-8

Regular: \$450 EB: \$400

- Join other campers that love sports by learning and practicing field games from around the world! Throughout the week campers will also have a slime war, water fights with the staff and get a little artsy by making a paintball gun canvas!



Iron Chefs

Ages 9-11

Regular: \$450 EB: \$400

- Get your hands dirty as you create some tasty recipes this week! Make your own menu, cook over a campfire, and try some delicious international dishes. Become an Iron Chef in no time!

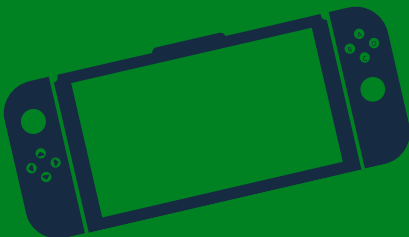
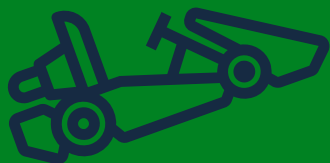


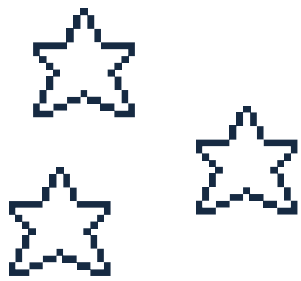
Gamers in the Wild

Ages 9-14

Regular: \$450 EB: \$400

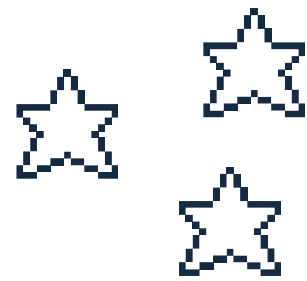
- This is Sandy Ridge's first ever gamer camp! Bring your favorite games to play with new friends (must be Wii or Nintendo Switch). Campers will also compete in Mario Kart and Just Dance on the big screen! Campers will also have the opportunity to do other camp activities.





WEEK 2

JUNE 23-28



Rapid Riders

Ages 12-17

Regular: \$650 EB: \$600

- Country Roads lead us to ACE Adventure Resort in Oak Hill, WV. Day one you will arrive at ACE and check out the ACE Waterpark. Girls will Ducky the upper New River on Day two, Camp out in a platform tent that evening and raft down the lower New River on day three. Adventure awaits!



Ropin' Wranglers

Ages 11-15

Regular: \$550 EB: \$500

- Join us as the girls travel to Fourth Rock Stables in Lumber Bridge, NC. Girls will spend 3 days at Fourth Rock Stables learning what it takes to be a cowgirl. Horses need lots of care, exercise and food. Girls will get a horse experience they will never forget. So get ready and saddle up!



CIT 1 & CIT 2

CIT 1 Ages 14-15

Regular: \$200 EB: \$150

CIT 2 Ages 16-17

FREE

- Please see the CIT page further on in the brochure for more details.

Backpacking 101

Ages 12-17

Regular: \$450 EB: \$400

- Please see the Girl Scouts Gone Backpacking page further on in the brochure for more details.

WEEK 3

JULY 7-12

HARRY POTTER WEEK

Wizards will see everything Sandy Ridge has to offer in the theme of Harry Potter.

Wizards years 1 to 3 will come to camp supporting their favorite house.

They will do activities with other houses of the same age throughout the week. For all of these young wizards meals, they will eat within their houses.

Year 1

Ages 6-8

Regular: \$450 EB: \$400

Year 2

Ages 9-11

Regular: \$450 EB: \$400

Year 3

Ages 11-14

Regular: \$450 EB: \$400



WEEK 3

JULY 7-12

HARRY POTTER WEEK

The Knight Bus

Ages 12-17

Regular: \$650 EB: \$600

- Coasters, Waterslides and Safaris... BRILLIANT! Every day will be an adventure. Carowinds, Wet-n-Wild & Eudora Safari are what awaits this day trip camp. Get max G force on a roller coaster, Splash down at Wet-N-Wild and Explore all the amazing animals at Eudora Safari. Wizards will return to camp each evening and to enjoy activities.



CIT 1 & CIT 2

CIT 1 Ages 14-15

Regular: \$200 EB: \$150

CIT 2 Ages 16-17

FREE

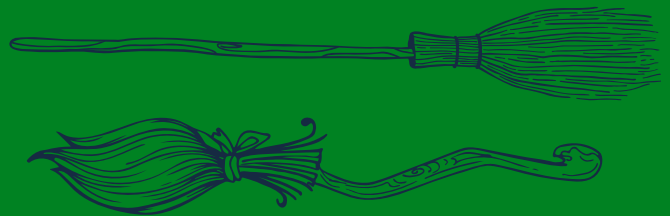
- Please see the CIT page further on in the brochure for more details.

Abraxan Riders

Ages 11-15

Regular: \$550 EB: \$500

- Join us as the wizards travel to Fourth Rock Stables in Lumber Bridge, NC. Wizards will spend 3 days at Fourth Rock Stables learning what it takes to be a quidditch master... we mean horse master. Wizards will get a horse experience they will never forget. So get ready and saddle up!



Tall Timbers

Ages 11-17

Regular: \$300 EB: \$250

- Please see the Tall Timbers page further on in the brochure for more details.



WEEK 4

JULY 14-19



Mini-Mermaids

Ages 6-8

Regular: \$450 EB: \$400

- Learn skills to become a better mermaid (we mean swimmer). Learn the importance of pool and lake safety. A night time pool party with disco lights will certainly be included. These mermaids will also have the opportunity of exploring the lake with a Go-Pro!



Crazy Science

Ages 9-11

Regular: \$450 EB: \$400

- Calling all scientists... We need your hands-on experience to complete all the challenges at camp this week! Build your STEM skills and accomplish amazing experiments, investigate the science behind the show, and study the results. Put on your thinking caps, you will need them this week!



Anime Camp

Ages 11-16

Regular: \$450 EB: \$400

- Calling all anime lovers! There are plenty of anime themed activities for anime lovers of any fandom. Train your strength like Deku and Tanjiro, train your ninja skills like Naruto, take to the water in search of treasure like Luffy, have a late night secret kitchen raid and anime movie, and work together to save the camp! Feel free to bring any cosplays costumes.





WEEK 4

JULY 14-19



Zombie Survivors

Ages 11-14

Regular: \$450 EB: \$400

- Sandy Ridge has been taken over by zombies! Learn the basics of living off the land, building a shelter, cooking outdoors, and building a fire. Campers will also go canoeing down the Pee Dee river.



CIT 1 & CIT 2

CIT 1 Ages 14-15

Regular: \$200 EB: \$150

CIT 2 Ages 16-17

FREE

- Please see the CIT page further on in the brochure for more details.

River Wild

Ages 11-16

Regular: \$600 EB: \$550

- Do you have an extreme taste for adventure? If you do then look no further. Campers will travel to Nantahala Outdoor Center in Bryson City, NC and experience a day rafting trip down the Nantahala River & Enjoy the Mountain Top Zip-line Park. Girls will stay in cabins and eat in NOC's dining hall.



Tall Timbers

Ages 11-17

Regular: \$300 EB: \$250

- Please see the Tall Timbers page further on in the brochure for more details.



WEEK 5

JULY 21-26



TAYLOR SWIFT WEEK

Calling all Swifties! This is your week to sparkle at Sandy Ridge!

Swifties will come to Sandy Ridge in their favorite era. They will do activities based off of all the Taylor Swift eras; from friendship bracelet and paper ring making, learning dances from the Eras Tour, plus Swifties will be able to experience every activity available at Sandy Ridge.

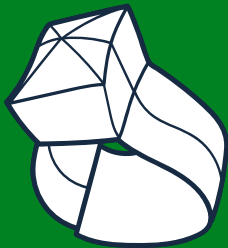
Evenings will include camp fires and disco balls along with a showing of Taylor Swift: The Eras Tour.

This will certainly not be a Cruel Summer at Sandy Ridge.

Fearless

Ages 6-8

Regular: \$450 EB: \$400



Wildest Dreams

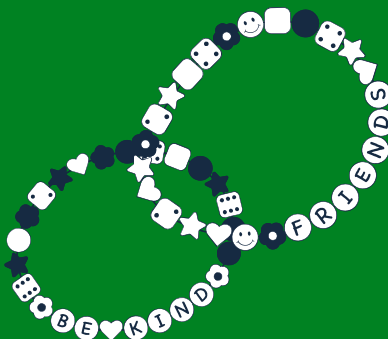
Ages 9-11

Regular: \$450 EB: \$400

...Read for it

Ages 12-14

Regular: \$450 EB: \$400





WEEK 5

JULY 21-26



TAYLOR SWIFT WEEK

Shake it off

Ages 12-17

Regular: \$650 EB: \$600

- It's time for our Swifties to travel to the land of folklore and enchantment in the area of Asheville, NC! Swifties will venture to Chimney Rock State Park for a guided tour by a park ranger. Swifties will then experience the enchanting Biltmore Castle where they explore the grounds and the castle where they will feel like they are in a Taylor Swift music video!



CIT 1 & CIT 2

CIT 1 Ages 14-15

Regular: \$200 EB: \$150

CIT 2 Ages 16-17

FREE

- Please see the CIT page further on in the brochure for more details.

White Horse

Ages 11-15

Regular: \$550 EB: \$500

- Join us as the Swifties travel to Fourth Rock Stables in Lumber Bridge, NC. Swifties will spend 3 days at Fourth Rock Stables learning what it takes to be a horse master. Swifties will get a horse experience they will never forget. So get ready and saddle up!

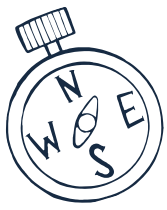


Tall Timbers

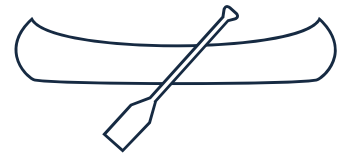
Ages 11-17

Regular: \$300 EB: \$250

- Please see the Tall Timbers page further on in the brochure for more details.



WEEK 6



JULY 28 - AUGUST 2

Craziness is happening at Sandy Ridge. We have lost the rulebook and certain rules have been overlooked for this week. Shoes or Flip-flops may be worn. Staying up and sleeping in are allowed. A pizza party is mandatory. Disco light night swims are in play. Pranking wars are a go and the glitter bombs are set. Girls choose their Schedules. The Camp Director is in hiding! (Bring your own squirt gun)

Troublemakers

Ages 6-8

Regular: \$450 EB: \$400

Monkey Business

Ages 9-11

Regular: \$450 EB: \$400

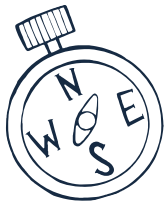


Bad Apples

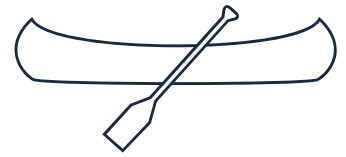
Ages 12-14

Regular: \$450 EB: \$400





WEEK 6



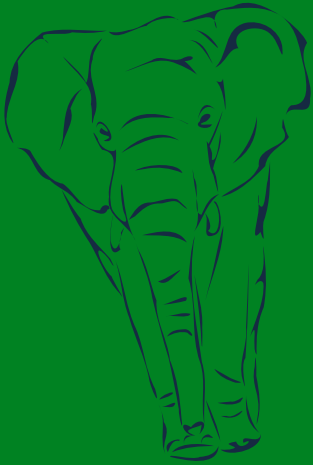
JULY 28 - AUGUST 2

Zoo Mania

Ages 12-17

Regular: \$550 EB: \$500

- Love animals and conservation? Join us as we travel to the North Carolina Zoo, Riverbank Zoo and Eudora Safari! Enjoy time exploring and learning about animals and conservation as we set off every day to one of these experiences! Campers will return to camp each evening and to enjoy camp activities.



CIT 1 & CIT 2

CIT 1 Ages 14-15

Regular: \$200 EB: \$150

CIT 2 Ages 16-17

FREE

- Please see the CIT page further on in the brochure for more details.

Tall Timbers

Ages 11-17

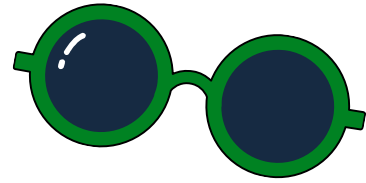
Regular: \$300 EB: \$250

- Please see the Tall Timbers page further on in the brochure for more details.

COUNSELOR-IN-TRAINING



(CIT)



The Counselor in Training Program is for girls ages 14 - 17 to develop the leadership skills in a camp environment.

They will learn camper development, group management, program planning, by shadowing unit leaders, camp director, assistant director, and program staff. In addition they will have the opportunity to implement and run program activities.

All while they learn:

- Communication
- Setting Goals
- Honesty and Integrity
- Decision Making
- Conflict Management

Counselor in Training 1

Ages 14 to 15

\$200 Regular

\$150 Early Bird

Counselor in Training 2

Ages 16 to 17

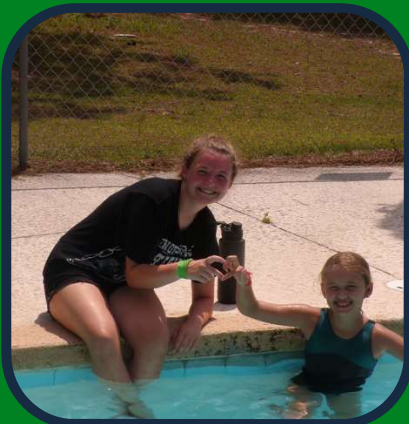
Free

(2 weeks of camp)

Junior Counselor

Ages 16+

Girls who are 16 and up can apply for a paid position



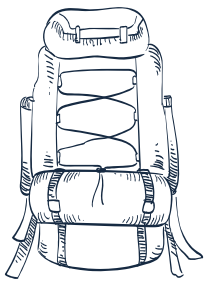
TALL TIMBERS

PRIMITIVE CAMPING

Have you ever wondered what to do if you were lost in the woods? Let your Girl Scout powers show you the way!

Campers will learn basic survival skills, fire building, outdoor cookie, shelter building and enjoy everything Sandy Ridge has to offer. night swims in the camp pool are in store for this group daily.





GIRL SCOUTS GONE BACKPACKING



Have you ever wanted to go backpacking? How about hiking a portion of the Appalachian Trail?

This 4 part series will help girls prepare and ready themselves for a 2 week Appalachian Trail hike in the summer of 2025.

Girls must attend the first 3 sessions of this program to be participate in the two week hike.

BACKPACKING 101

JUNE 23-28 – Sandy Ridge – Tall Timbers-
Week 2 of Summer Camp \$450

BACKPACKING 102

OCT 4-6 – Sandy Ridge - Tall Timbers-
Weekend - \$75

BACKPACKING 103

April 11-13 – Sandy Ridge-Tall Timbers-
Weekend - \$75

BACKPACKING 104

TBA



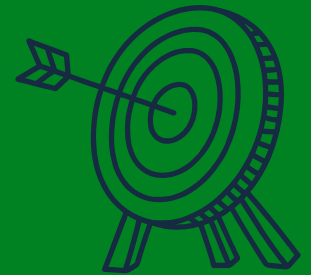
DAD, MOM, AND FAMILY WEEKENDS

Dad & Me Weekend

June 14-16

\$75 Per participant

- Sandy Ridge is the perfect place for some father-daughter bonding. Spend the weekend trying everything camp has to offer including: canoeing, swimming, hiking, archery, zip-lining into the lake, and even building a rocket and launching it!



Family Camp Weekend

July 19-21

\$75 Per participant

Children under 6 are ___ per person; activities will be limited.

- Spend the weekend at Sandy Ridge with some of your favorite people - your family! There will be time for swimming, canoeing, hiking, crafts, singing, family team-building, and so much more!

Mom & Me Weekend

June 21-23

\$75 Per participant

- Spend the weekend trying everything Sand Ridge has to offer including: hiking arts and crafts, archery, canoeing, paddle boarding, and kayaking. This is perfect time for some mother-daughter bonding time!



TROOP ADVENTURE CAMP

(TAC)

JUNE 28-30 AND JULY 12-14

Troop Adventure Camp (TAC) allows Troops to plan their own camp experience with the help of their Sandy Ridge staff hostesses. They can create an experience just right for them.

Activities Troops can choose from:

- Swimming
- Arts and Crafts
- Lake Exploration
- Canoeing, kayaking, stand-up paddle boarding
- Star Gazing/Night Hikes
- Archery
- Tomahawk Throwing
- Slingshots
- Paintball target range
- team building
- Sports Games
- Lake zip-line
- water slide
- lake inflatables

**BONUS TAC THEMES
ARE AVAILABLE
FURTHER ON IN THE
CAMP BROCHURE!**

Troop Adventure Camp runs from Friday evening with check-in between 7-8pm to Sunday morning with check-out at 10am. Four meals are included.

Troop Adventure camp fees: \$75 per participant

There must be a minimum of two adults in attendance with every Troop at TAC.

Troop leaders must provide supervision of girls in the following ratios:

- Two adults for every 6 Daisies. One additional adult for every 1-4 Daisies.
- Two adults for every 12 Brownies. One additional adult for every 1-6 Brownies.
- Two adults for every 16 Juniors. One additional adult for every 1-8 Juniors.
- Two adults for every 20 Cadettes. One additional adult for every 1-10 Cadettes.
- Two adults for every 24 Seniors and Ambassadors. One additional adult for every 1-12 Senior and Ambassadors.



To Register: bit.ly/24SRTAC



WATER EDITION

Troop Adventure Camp

Pick your date & activity

Available April, May, September & October

Pee Dee River Trip - \$75 per participant

Join us for a day trip down The Great Pee Dee River. Troops can canoe up to 18 people down the river. River Trip takes about 6 hours with breaks and lunch. Includes: Trip Staff, Lodging at Sandy Ridge (Fri-Sun) & 3 meals on Saturday and Sunday Breakfast. Canoe experience is required.



Canoeing 101 - \$75 per participant

Join at Sandy Ridge for Canoeing 101. Troop will spend time on the Sandy Ridge Lake learning how to Paddle and Steer a canoe, Rescue an overturned canoe and Water Safety. Includes: Staff, Lodging at Sandy Ridge (Fri-Sun) & 3 meals on Saturday and Sunday Breakfast.



Lake Day - \$75 per participant

Join us Sandy Ridge for a Lake Day. Canoeing, Paddle Boarding & Kayaking are all available. Then head over to the beach side to swim, waterslide and zip-line into the water or just relax and soak up the sun. Includes: Trip Staff, Lodging at Sandy Ridge (Fri-Sun) & 3 meals Saturday and Sunday Breakfast.



 **3680 Girl Scout Rd
Bennettsville SC 29512**

 **To Register: bit.ly/24SRTAC**

 **843-479-6814**  **Sandyridge@girlscoutsc.org**

girl scouts
of eastern
south carolina

LAND EDITION

Troop Adventure Camp

Pick your date & activity

*Available January, February, March, April, May,
September, October & November*



Sandy Ridge Sampler- \$75 per participant

If this is your first visit to Sandy Ridge then this program is the one for your troop. See everything Sandy Ridge has to offer. Shooting Sports, Crafts, Lake and S'mores



Sharp Shooters- \$75 per participant

Spend the weekend improving your aim in this Shooting Sports Extravaganza. Archery (B), Slingshots(J), Throwing Tomahawks(C) and Target Paintball(J). Letter at end of activity indicates lowest GS Level.



Crafts & S'mores- \$75 per participant

Crafts, Painting, Braclet Making are just a few of the project you work on while hanging at the Sandy Ridge Craft Hut. Relax and enjoy your weekend of Crafting.



📍 3680 Girl Scout Rd
Bennettsville SC 29512



To Register: bit.ly/24SRTAC

☎ 843-479-6814 ✉ Sandyridge@girlscoutscsc.org

girl scouts
of eastern
south carolina



STEM EDITION

Troop Adventure Camp

Pick your date & activity

Available January, February, March, April, May, September, October & November



Blast Off - \$75 per participant

3....2....1....Liftoff! This weekend is all about Rockets. Troops will build a Large rocket as a team and also a smaller rocket individually. Once complete they will launch and recover. All Systems are Go for fun!



Drone Pilot- \$75 per participant

Come join us for this drone flying adventure. learn to fly and flip and drone in mid-air. Design a obstacle course and race the drone through it. Who will be the best pilot.



Robot Rodeo- \$75 per participant

Can you build a robot? Sure you can. Make a weekend of building a robot from a kit. Then put your minds to work to build a 5ft bridge to get your robot from one table to another using only the supplied items. Build and design your way into Sandy Ridge history!



3680 Girl Scout Rd
Bennettsville SC 29512

To Register: bit.ly/24SRTAC

843-479-6814 Sandyridge@girlscoutsc.org

girl scouts
of eastern
south carolina